

“Construction Chemicals and Waterproofing”

At Fibrex, our mission is to focus ourselves towards becoming leader, in developing huge range of innovative solutions for construction industry with every aspect for improving the durability, efficiency, quality and the visual changes that can take place in buildings, infrastructure, facilities, throughout production and use, and in turn making a significant contribution to sustainable development.

Current market is focusing on the products based on advanced & sustainable technology. Our R&D team, is continuously working on the development of these products with a mission to develop global level concepts with sustainable solutions that maximize environmental presence & higher quality parameters in all our products.

Fibrex Construction Chemicals Pvt. Ltd., an ISO 9001-2015 certified Company is engaged in offering a wide range of Chemicals and Additives to meet requirements of construction, automotive, cement and other industries. Our product range includes

Floor Hardeners, Epoxy Flooring & Coatings, Grouts, Waterproofing Coating, Waterproofing Admixtures, Joint Sealants, Repair Compounds, Curing & Sealing Compounds, Admixtures, Tile Grouts /Adhesives & Corrosion Protection Coatings.

EPOXY FLOORINGS & COATINGS

FIBFLOOR-(SCREED): Heavy Duty Abrasion Resistant Epoxy Flooring

FIBFLOOR (SL): Self Leveling Epoxy Flooring

FIBFLOOR-(PRIMER): Epoxy Primer

FIBFLOOR-(FC): Build Epoxy Coating

FIBFLOOR-(SC): Sealer Coats

FIBFLOOR-(PES): Penetrating Epoxy Sealer Coats

FIBFLOOR-(WB): Water Based Epoxy Coating

FIBFLOOR-(CEM): Epoxy-Cement Composite Floor

FIBFLOOR-(PU): Polyurethane Coating

FIBFLOOR-(SLC): Epoxy Self Leveling Coating

FIBFLOOR SL-UL: Self-Leveling Epoxy Underlay Screed Floor Coating



EPOXY

FIBFLOOR CAR DECK SYSTEM is a multi layer, multi polymer coating system comprising of an epoxy primer, epoxy car deck system to form seamless, anti skid coatings in attractive colors. The parking stalls, the drive aisles, the turn lanes and the access ramps. To maintain structural integrity and to ensure longevity of multi storey car park concrete structures.

FIBELASTIC (PU) SPRAY APPLIED WATERPROOFING The product is a one component Hybrid liquid applied elastomeric membrane which can be sprayed or hand applied, made up of special PU aliphatic polymer systems to form a tough impervious membrane.



SPRAY APPLIED WATERPROOFING

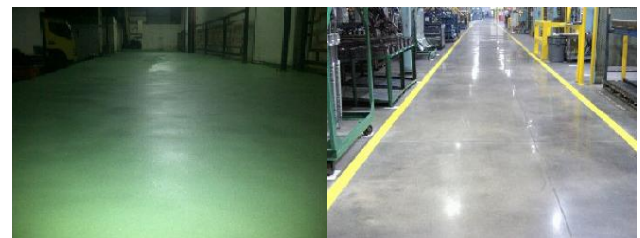
FLOOR HARDENER

FIBFLOOR (HT): Non-Metallic, Mineral Based

FIBFLOOR (HTM): Non-Oxidizing, Heavy Duty Metallic Floor Hardener

FIBFLOOR (HD): Heavy Duty Metallic Floor Hardener

FIBFLOOR (LH): Liquid Hardener & Dust Proofer



FLOOR HARDENER

PRECAST JOINTING SOLUTION

FIBFLEX (GEOMAT): Waterproofing tape/ flashing for constructions joints.

FIBFLEX (GEOMAT) is ready to use water proofing Tape especially developed for Precast Joint Treatment is highly recommended to waterproof the External Joints in Precast concrete.

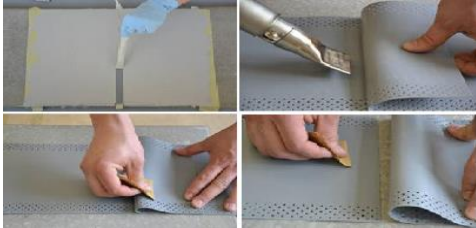


FIBFLEX (GEOMAT)

“Construction Chemicals and Waterproofing”

EXPANSION JOINT WATERPROOFING TAPE

FIBFLEX (EP) TAPE has specially being designed to completely water tight all types of expansion joints having high ability to accommodate structural movements.



FIBFLEX (EP) TAPE

FIBWEATHER (High-end exterior acrylic elastomeric paint)

A unique elastomeric high build coating based on a revolutionary acrylic polymer with quick-set capabilities to resist premature moisture attack.



FIBWEATHER

FIBSEAL (JSP 700) - Polyurethane Modified Joint Sealant

Typical application includes expansion Joints in residential, commercial or industrial buildings. Use as a kota joint filler



FIBSEAL (JSP - 700)

FIBELASTIC SAM - Liquid applied elastomeric membrane

One component reactive liquid applied elastomeric membrane which can be sprayed or hand applied, made up of special polymer systems to form a tough impervious membrane.



FIBELASTIC SAM APPLICATION IMAGE

Concrete Chemicals (Admixtures) and Applications

Admixtures are natural or manufactured chemicals other than cement, aggregate and water that are added to concrete either before or during its mixing to alter its properties, such as workability, curing temperature range, set time or color. Some admixtures have been in use for a very long time in concrete construction, such as calcium chloride to provide a cold-weather setting concrete.

Based on their functions, admixtures can be classified into the following five major categories:

- Retarding admixtures
- Accelerating admixtures
- Super plasticizers
- Water reducing admixtures
- Air-entraining admixtures



ADMIXTURE